



SURPLUS DISPOSITION

IMPORTANT NOTICE: **ENTRY WILL BE BY APPOINTMENT ONLY AND MUST BE ESCORTED BY NVE STAFF**

To schedule an appointment to view of surplus materials, contact:

- Sheldon Barnes, Capital Projects Director (253) 335-2301
- OR Natalie Webb, Capital Projects Administrative Assistant (907) 351-2461

Timeframe:

- Surplus starts Monday, February 10, 2025. There is no deadline; however, material must be moved prior to any snowfall. Anything not surplusd will be offered to the general public and/or destroyed by February 18, 2025.

NVE Leftover Building Material Surplus

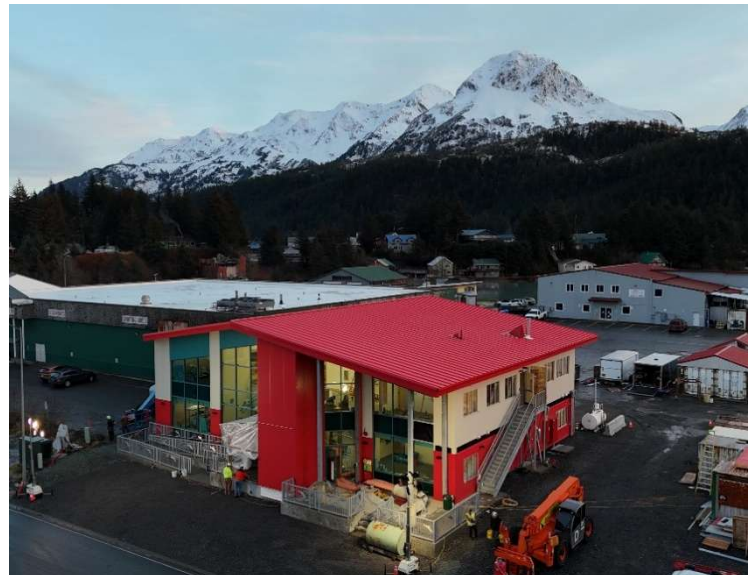
NVE is performing a Building Material Surplus at our main NVE Office at 110 Nicholoff Road for Tribal Members. Items are *First-Come, First-Serve*. However, if there is more than one Tribal Member interested, items will be distributed equally.

Inventory forms must be completed and submitted at the time of pickup and must contain the following information:

- Name
- Contact number & email
- Date submitted

General List of Items; subject to change:

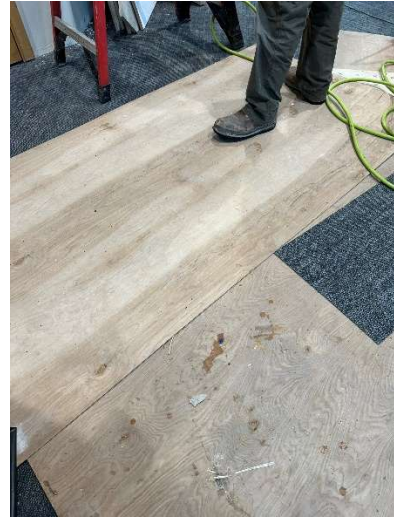
- Assorted coving/wall base
- Maple Window Sills
- Salto Keyless Locks
- Vinyl Sheet Flooring
- 4x8' or miscellaneous sizes of plywood
- Electric Elevator Components
- Wind Wall Siding (Red or Blue in Color)
- Assorted Rebar and L-shaped plates
- Galvanized Sheet Metal Trim
- Conduits
- Metal Stud Framing
- Open Web Joists
- Wooden & Hollow Metal Doors
- Dutch Door
- Metal Blinds
- Knock Down Door Frame – Metal
- Cabinet(s)
- Flooring Materials and Glue
- Tempered Glass
- Leftover Paint





PO Box 1388 • 705 Second St. (temp) • Cordova, Alaska 99574 • (907) 424-7738 • eyak-nsn.gov
Published Tuesday, February 4, 2025

SURPLUS DISPOSITION





PO Box 1388 • 705 Second St. (temp) • Cordova, Alaska 99574 • (907) 424-7738 • eyak-nsn.gov
Published Tuesday, February 4, 2025

SURPLUS DISPOSITION





PO Box 1388 • 705 Second St. (temp) • Cordova, Alaska 99574 • (907) 424-7738 • eyak-nsn.gov
Published Tuesday, February 4, 2025

SURPLUS DISPOSITION

